



POTS Transformation

Stay on Pace with Copper Retirement

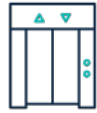
Copper retirement is accelerating leaving customers with major price hikes and reduced service. AT&T recently announced plans for a complete phase-out of Plain Old Telephone Service (POTS) lines by 2029. This impacts many businesses still relying on them for not only voice but also specialty lines tied to critical systems, including: fire panels, security systems, elevators, fax machines, point-of-sale terminals and more.



FIRE
PANELS



SECURITY
SYSTEMS



ELEVATORS



FAX
MACHINES



POS
TERMINALS



VENDING
MACHINES



ATM
MACHINES

Why MetTel

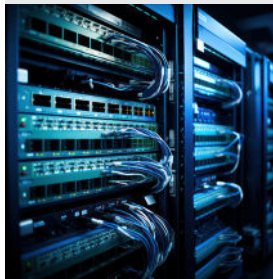
MetTel offers a turnkey solution for upgrading your analog lines that will not only help you avoid disruptions to your critical business operations, but you can stand to save 30% or more. Our solution is compatible with the broadest range of legacy telecom and safety/security equipment with the ability to be configured to unique systems. Plus, it has built in redundancy to keep your systems online.

MARKET-LEADING MULTI-WAN ROUTER



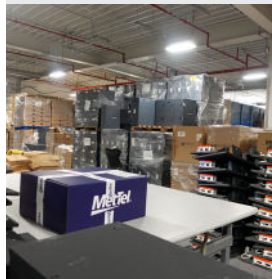
Best-In-Class Product line Provides Flexibility and Business Continuity in a Single Device.

SMART NETWORK



MetTel network is Geographically Dispersed with Multi-layer Redundancy for Speed & Security.

WAREHOUSE SERVICES



Stock on-hand of pre-configured and pre-tested boards to support rapid, large-scale deployments.

TURNKEY INSTALLATION



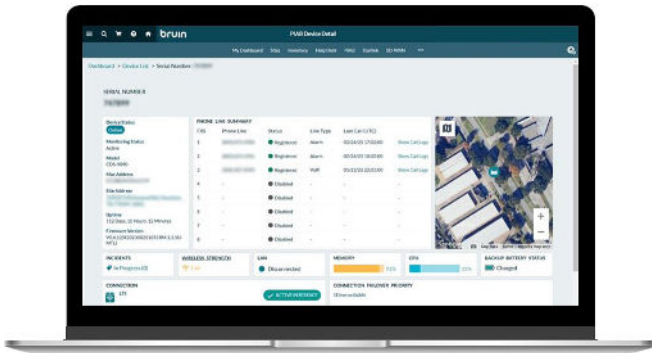
Expert installation and intelligence for seamless integration with legacy systems that can be scheduled right in our app.

MANAGED SERVICES



Complete lifecycle management services, 24/7/365 support, and visibility into your environment.

Monitor & Manage Through a Single Interface



- View total count of all edge devices and including managed voice and specialty lines (i.e., fire alarm/burglar)
- Quickly identify sites with critical line failure
- Monitor trends for network uptime, outages, and failures.
- Subscribe to a daily, weekly, or monthly executive PDF report of all your network data and analytics

Experts in Complex, Large-Scale Deployments



EXTRA SPACE STORAGE

At least 4 different telecom aggregators attempted POTS replacement for Extra Space Storage unsuccessfully before MetTel was brought in.



The USPS to put their trust in MetTel to manage complex copper replacements across 17,000 sites nationwide. At peak, MetTel was installing 250+ sites per day!

About MetTel

MetTel is a global communications solutions provider for businesses and government agencies. We design and deploy tailored connectivity and networking solutions for voice, data, mobility, and IoT by leveraging our global private network and the industry's broadest portfolio of innovative technology.

For the 5th year in a row, we have been named a Leader in Gartner's Magic Quadrant for Managed Network Services. Our leadership is driven by our expertise in network automation and performance, consistently delivering tailored solutions that exceed expectations. Our approach encompassing technological innovation, unmatched customer service, and economic value, is what sets us apart.



Gartner, Magic Quadrant for Managed Network Services, Ted Corbett, Karen Brown, Danellie Young, Jon Dressel, Lisa Pierce, Nauman Raja, October 14, 2024.

GARTNER is a registered trademark and service mark and MAGIC QUADRANT is a registered trademark of Gartner, Inc. and/or its affiliates in the U.S. and internationally and are used herein with permission. All rights reserved.

Gartner does not endorse any vendor, product or service depicted in its research publications, and does not advise technology users to select only those vendors with the highest ratings. Gartner research publications consist of the opinions of Gartner's research organization and should not be construed as statements of fact. Gartner disclaims all warranties, expressed or implied, with respect to this research, including any warranties of merchantability or fitness for a particular purpose.



For more info, contact the Safari Team at Communications@safari-solutions.com.
© 2025 MetTel. All rights reserved.